

## Evergreen Trees

### Balsam Fir *Abies balsamea*

Native

50-60' tall, 20-30' wide  
 Prefers well-drained, acidic soil  
 Very shade tolerant  
 Dislikes heat and dry air  
 Deer food



### Eastern Red Cedar *Juniperus virginiana*

Native

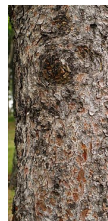
40-50' tall, 8-15' wide  
 Tolerant of most soils  
 Full sun  
 Waxy blue berry-like cones  
 Moderate growth rate



### White Spruce *Picea glauca*

Native

40-60' tall, 10-20' wide  
 Prefers well-drained, sandy, acidic soil  
 Full sun  
 Salt tolerant



### Eastern White Pine *Pinus strobus*

Native

50-80' tall, 30-50' wide  
 Prefers moist, well-drained slightly acidic soil  
 Full sun  
 Fast growth rate  
 Susceptible to salt



## Evergreen Trees, cont.

### Red Pine *Pinus resinosa*

Native

50-70' tall

Prefers dry, loose sandy soil with low pH

Full sun

Medium growth rate



## Deciduous Evergreen Trees

### American Larch *Larix laricina*

Native

50-80' tall, 20-30' wide

Excellent plant for moist, boggy soils

Full sun

Showy yellow needles in fall

Slow to moderate growth rate



### Common Baldcypress *Taxodium distichum*

50-70' tall

Prefers acidic soil

Tolerant of permanently wet soils

Full sun

Tolerant of strong winds

